

# TRI®+ Digital Solutions

## DENTAL WINGS MANUAL

V1.2\_2018-02-12



### NOTE

TRI®+ represents the interface between the TRI® dental implant system and the Dental Wings digital solutions. The following instructions are intended only for users who are familiar with the Dental Wings solutions.

### SCOPE

---

#### CADCAM

- Download and installation of TRI® Dental Implants libraries.
- Process Description

#### GUIDED SURGERY (coDiagnostiX)

- 3D implant planning
- Guided pilot drilling without depth stop
- Guided pilot drilling with depth stop

### DOWNLOADS

---

#### CADCAM

Please request the following file at [digital@tri-implants.com](mailto:digital@tri-implants.com) and upload into your Dental Wings software.

#### GUIDED SURGERY (coDiagnostiX)

There are no downloads required. All TRI implants are implemented in the current version of coDiagnostiX.

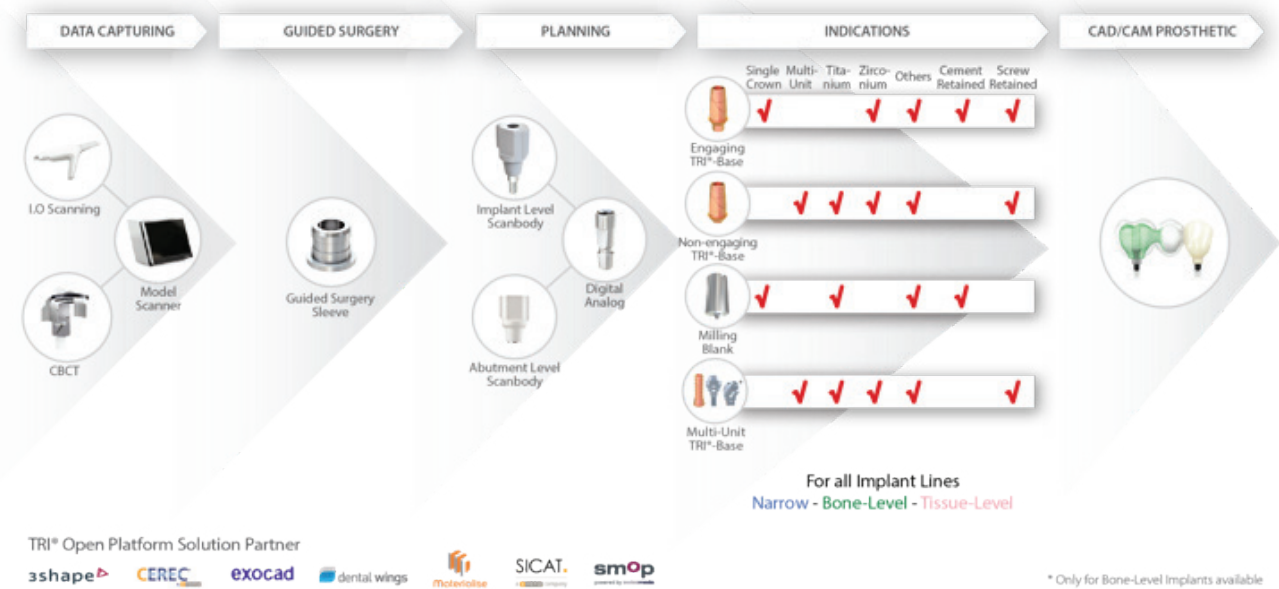
The TRI sleeve systems will be implemented in the next version coDiagnostiX 9.1.1 that will be released in November.

For support, please contact [digital@tri-implants.com](mailto:digital@tri-implants.com).

Please refer to the TRI® Product Catalog for all article numbers

## TRI<sup>®</sup>+ DIGITAL WORKFLOW OVERVIEW

TRI<sup>®</sup>+ Digital Solutions guarantees a universal implant open interface to leading technology partners in digital dentistry. In contrast to numerous locked digital systems, TRI<sup>®</sup> helps creating more transparency and eliminating all barriers for their respective treatments. TRI<sup>®</sup>+ Digital Solutions allows a wide range of indications via 3D Planning, Guided Surgery, CAD Abutments, CAD/CAM screw-retained and cement-retained restorations or modern treatments such as All-on-TRI<sup>®</sup> procedures. Linked with the lean and intelligent dental implant system of TRI<sup>®</sup>, treatment options from simple to complex without limits has never been easier.



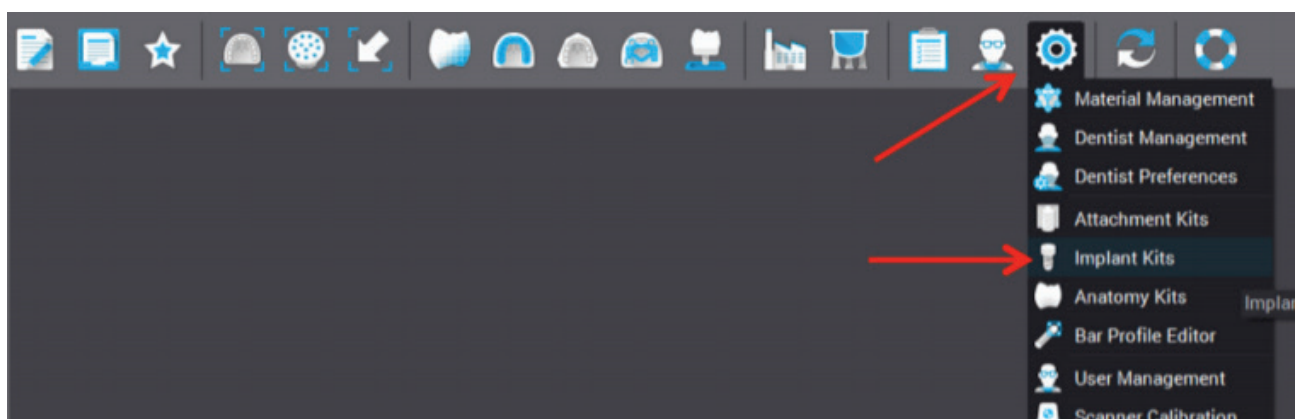
For details on the article numbers, please refer to the TRI<sup>®</sup> Product Catalogue.

## DOWNLOAD AND INSTALLATION

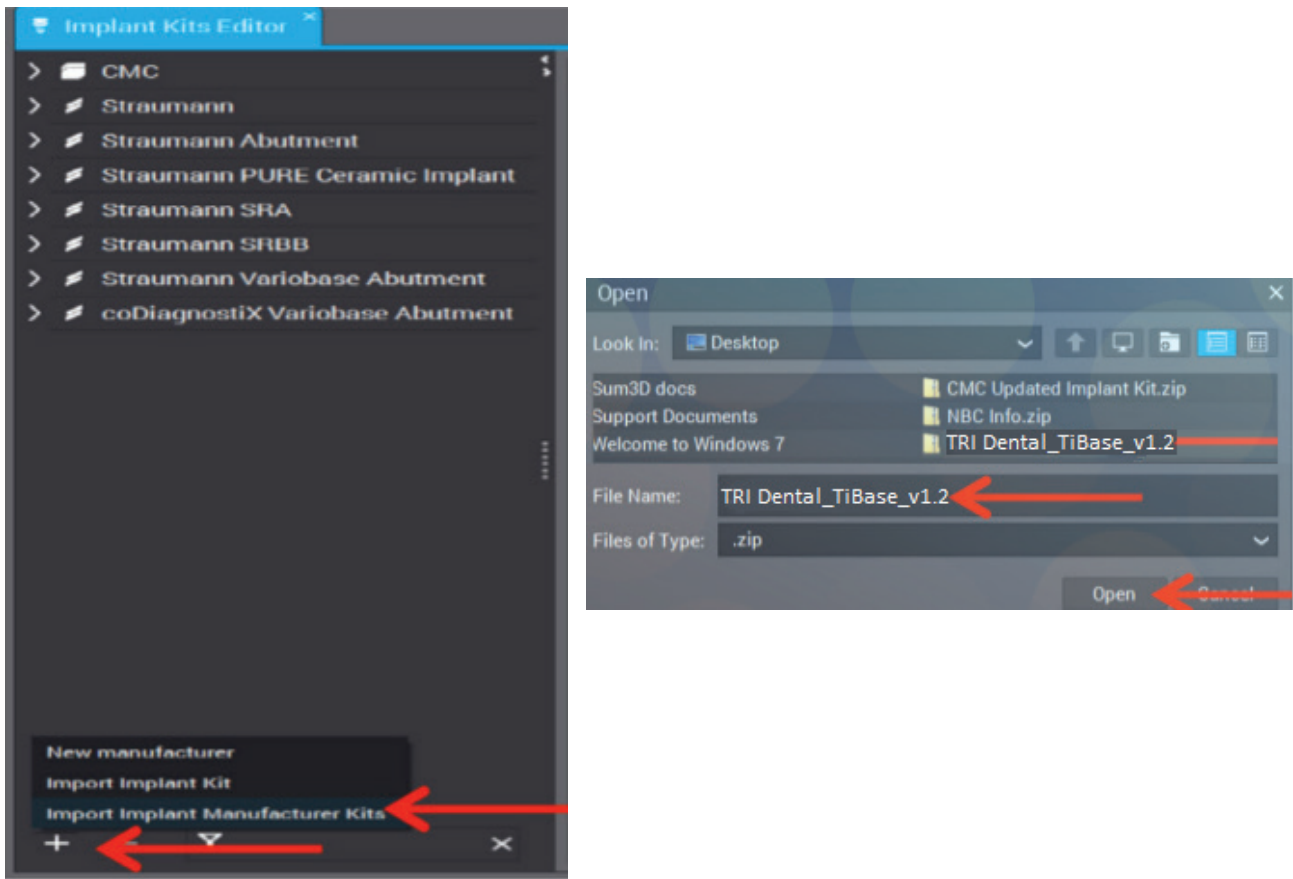
1. Download the zip folder e.g. "TRI Dental\_TiBase\_v1.2"

Previous versions of existing CAD libraries for prosthetic components should be deleted before importing the new library in order to minimize data errors

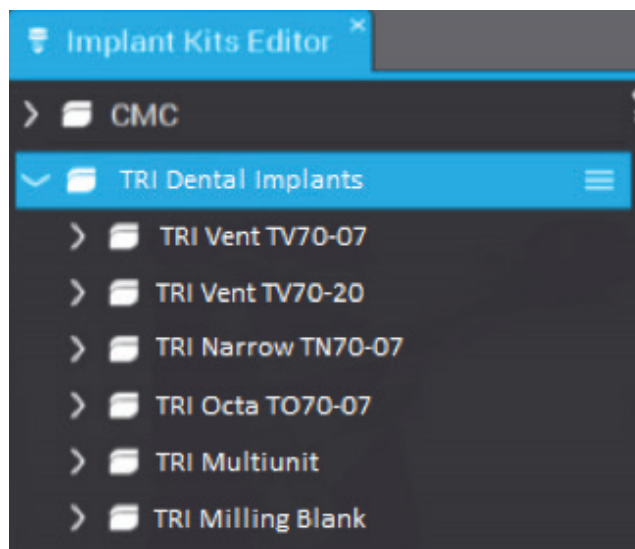
2. Save the zip file on your local computer.
3. Open Dental Wings and go to Implant Kits application, located under Gears Icon



4. In Implant Kit Editor application, select the "+" icon on lower left area of window and then select "Import Implant Manufacturer Kit".



5. Once the import process is completed, the TRI® Dental Implant Library can be found in Implant Kits application.



6. Dental Wings CAD software can now be used with the TRI® Dental Implants library

## PROCESS DESCRIPTION

---

### TRI®-Base: Titanium Bonding Base Implant Level

Titanium bonding bases represent an interface between zirconium CAD/CAM prosthetics and implants of the TRI® Dental Implant System.

There are four TRI® kits available for Dental Wings users:

1. TV70-07 (height 0.7mm)
2. TV70-20 (height 2.0 mm)
3. TN70-07 (height 0.7mm)
4. TO70-07 (height 0.7mm)

Each TRI®-Base kit has four different customizing options so you can select the version you need according to your indication in the 3Shape Software and the patient anatomy:

*Example TiBase TV70-20-F*

**LONG**



**SHORT**



**ANGLED**



**SHORT-ANGLED**

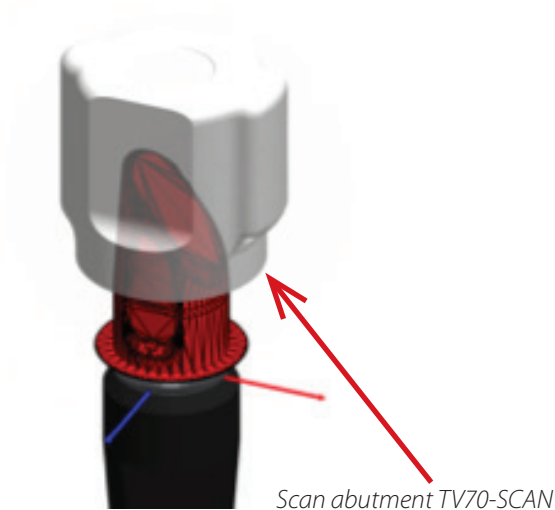


The TRI®-Base is available as an engaging version for single unit restorations and as a non-engaging version for multi unit restorations.

### IMPORTANT NOTE

Please use the below specified orientation of the implant-level Scan body if you select the **Angled** and **Short-Angled** version.

*Example: abutment kit for TV70-07*



## Titanium Bonding Base on Abutment Level

Screw retained ceramic restorations on TRI® implants are based on the TRI®TV40, TRI®TV50, TRI®TN40 and TRI®TO40 screw retained abutments together with the TTA bonding base.

TTA Abutment has four different customizing options so you can select the version you need according to your indication in the Dental Wings Software and the patient anatomy:

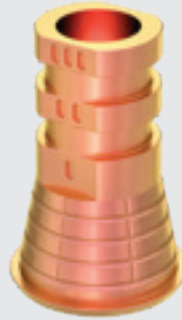
**VERSION I**



**VERSION II**



**VERSION III**



**VERSION IV**



For CAD/CAM restoration based on multi unit abutments, please use the multi-unit Scanbody Art. No. TV40-Scan.

## TRI®-Blank: CAD/CAM Titanium Milling Blank

The TRI® Blank is titanium milling blank abutment with prefabricated connection and soft tissue geometries, which are used for fabricating customized cad/cam titanium abutments in-house.

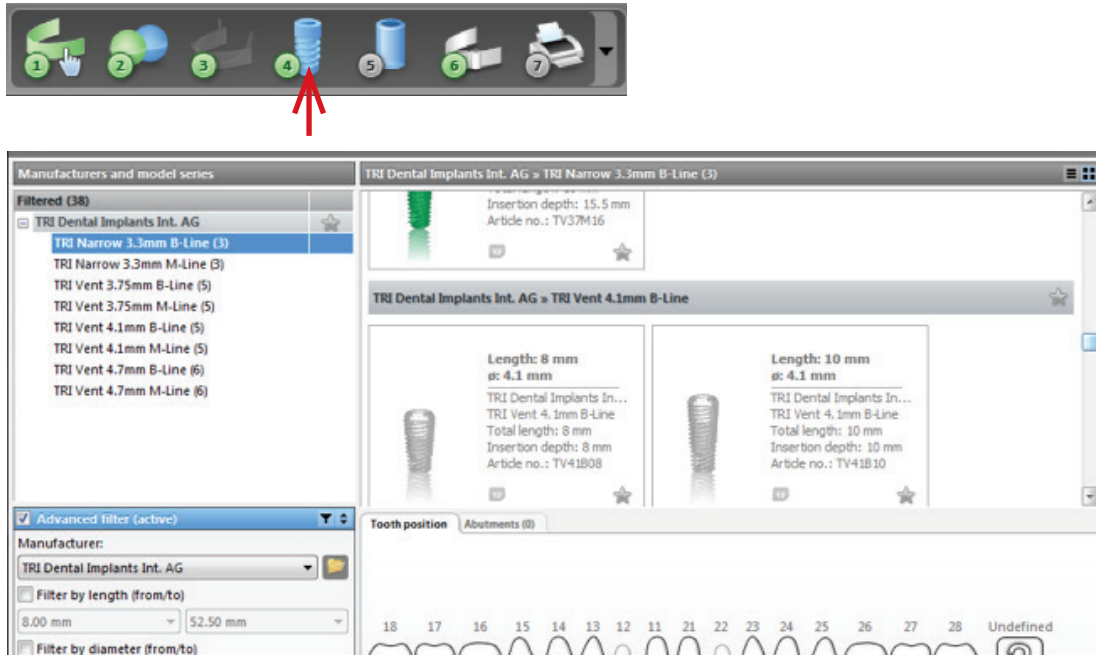
TRI®-Blanks are available for all implant lines of the TRI® Dental Implant System:

1. TV70-Blank-F
2. TN70-Blank-F
3. TO70-Blank-F

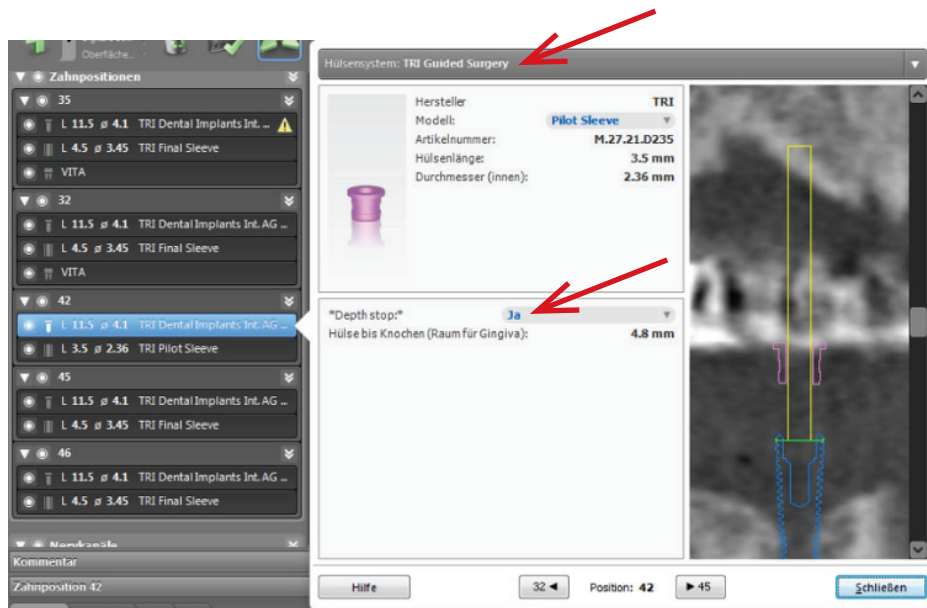
Please use the Scanbody according to the Implant Lines (Bone-Level, Narrow, Tissue-Level)



## PROCESS DESCRIPTION GUIDED SURGERY (CODIAGNOSTIX)



All TRI® implants are implemented in the coDiagnostiX implant library



Select "TRI® guided surgery" in the dropdown menu for the sleeve system. When selecting the depth stop option, the sleeve will automatically be positioned at the correct height above the implant. The long TRI® pilot drill (TPD-2.3L) can be used with this sleeve (TPDS) for guided pilot drilling with depth stop without the need for any additional instruments.

## REQUIRED ARTICLES FROM TRI® IMPLANTS

### Guided Surgery

TPD-2.3L	Pilot Drill – Long – 2.3 mm; Nr. 5
TPDS	TRI pilot drill sleeve